



*L & C Series*

# **LUBETECH**

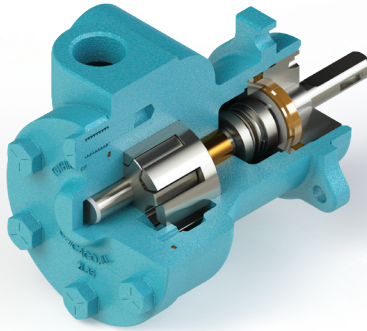
*Time-Tested Durability and Reliability  
Lubrication and Circulation Solutions*

# LEGENDARY SUCCESS

... with more than 125 years of engineering experience

The LubeTech Series pumps have set the industry standard for lubrication and circulation applications. This family of internal gear pumps have been engineered to satisfy customers' ever-changing requirements throughout a wide range of applications.

## L SERIES PUMPS



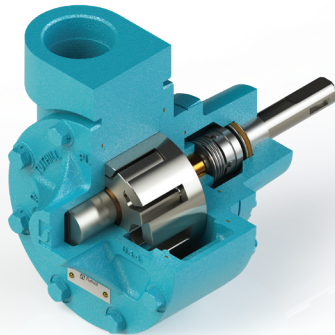
### DURABILITY

- Cast iron construction
- Single-piece steel rotor assemblies
- Exceptional life

### PERFORMANCE

- Precision machining and grinding
- Minimal running clearances
- Consistent flow and high differential pressures

## C SERIES PUMPS



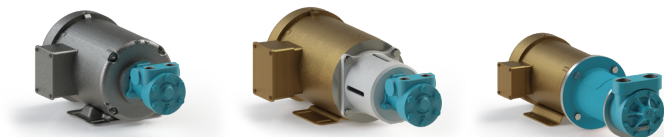
### CONFIGURABLE

- Mounting, driving, and sealing options
- Bushing and bearing options
- Standard offering covers wide range of applications

## COMPACT & RATED TO MOTOR SPEED

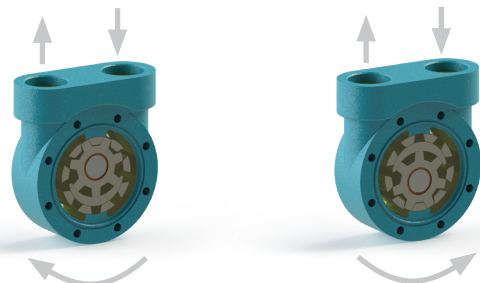
L & C series pumps have a variety of drive options:

- Foot
- NEMA C-Face
- Frame (OEM)
- IEC flanged



## UNIQUE REVERSING FEATURE

Ideal for rotating equipment and power transmission where direction of flow must remain consistent, even when shaft rotation changes.





## L SERIES

**Durable:** Cast iron, internal gear construction

**Compact:** Suitable for equipment, motor, or adapter mounting

Available with internal relief valve and reversing feature. Single mechanical seal is standard.

NOMINAL FLOW RATE BASED ON 200 SSU @ 100

| MODEL | GPM  |          |          | LPM  |          |          |
|-------|------|----------|----------|------|----------|----------|
|       | Flow | Pressure | Speed    | Flow | Pressure | Speed    |
| 00L   | 0.9  | @        | 1750 RPM | 3.4  | @        | 1750 RPM |
| 0L    | 1.5  | @        | 1750 RPM | 5.7  | @        | 1750 RPM |
| 1L    | 3.0  | @        | 1750 RPM | 11.4 | @        | 1750 RPM |
| 2L    | 5.5  | @        | 1750 RPM | 20.8 | @        | 1750 RPM |
| 5L    | 13.0 | @        | 1750 RPM | 49.2 | @        | 1750 RPM |

Consult factory for speeds above 1800 RPM and/or viscosities above 5000 SSU (1078 CST)

- Differential Pressures to 300 PSI (20.7 BAR)
- Temperatures to 375°F (190°C)
- Viscosities 40 SSU to 5000 SSU (4 CST to 1078 CST)



## C SERIES

**Durable:** Cast iron, internal gear construction

**Compact:** Suitable for foot, adapter, or flange mount to equipment

Available with internal relief valve and reversing feature. Multiple sealing options available.

NOMINAL FLOW RATE BASED ON 200 SSU @ 50 PSI

| MODEL | GPM  |          |          | LPM  |          |          |
|-------|------|----------|----------|------|----------|----------|
|       | Flow | Pressure | Speed    | Flow | Pressure | Speed    |
| 2C    | 9    | @        | 1750 RPM | 34   | @        | 1750 RPM |
| 3C    | 18   | @        | 1750 RPM | 68   | @        | 1750 RPM |
| 4C    | 36   | @        | 1750 RPM | 136  | @        | 1750 RPM |
| 5C    | 60   | @        | 1750 RPM | 227  | @        | 1750 RPM |
| 6C    | 84   | @        | 1750 RPM | 318  | @        | 1750 RPM |

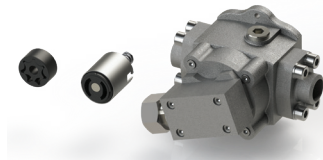
Consult factory for speeds above 1800 RPM and/or viscosities above 25000 SSU (5394 CST)

- Differential Pressures to 150 PSI (10.3 BAR)
- Temperatures to 375°F (190°C)
- Viscosities 40 SSU to 25,000 SSU (4 CST to 5394 CST)



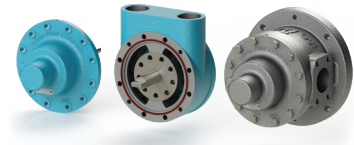
## CARTRIDGE PUMPS

- Cast iron, internal gear design
- Flow up to 5.5 GPM (22 LPM)
- Differential pressures up to 150 PSI (10 BAR)
- Compact design mounts directly to OEM equipment
- Multiple porting and driving options



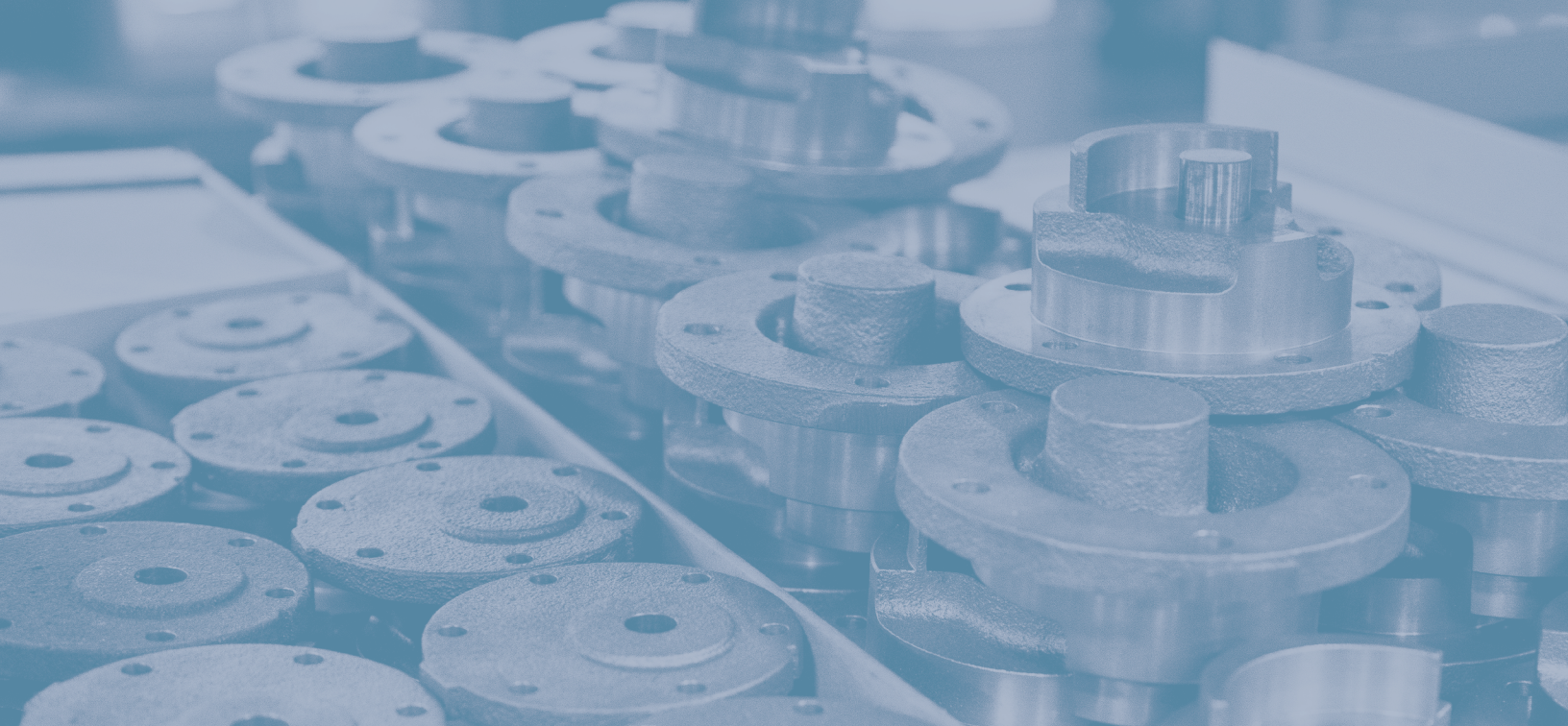
## GEROTOR PUMPS

- Gerotor pump design
- Flow up to 20 GPM (75 LPM)
- Differential pressures up to 300 PSI (20.7 BAR)
- Shaft speeds up to 4000 RPM
- Multiple integration options for OEM equipment



## CUSTOM SOLUTIONS

- Cast iron, internal gear design
- Flow rates up to 84 GPM (318 LPM)
- Differential pressures up to 250 PSI (17.2 BAR)
- Engineered into OEM equipment



## INDUSTRIES AND APPLICATIONS

- Air Compressors & Pumping Equipment
- Energy & Power
- Fluid Oils
- Fluid Transfer
- Gear Box & Power Transmission
- Heavy Machinery & Equipment
- Natural Gas Compressors
- Oil & Gas
- Paints & Coating
- Refrigeration & AC Compressors



### Ingersoll Rand

12500 South Pulaski Road  
Alsip, Illinois 60803 USA  
P: 708.389.2500  
Alsip@Tuthill.com

Birkdale Close  
Manners Industrial Estate  
Ilkeston, Derbyshire DE7 8YA UK  
P: 44.0.115.932.5226  
Ilkeston@Tuthill.com



© 2022 Ingersoll Rand  
IR-0922-001 EN