

1000 Series

1000 Series

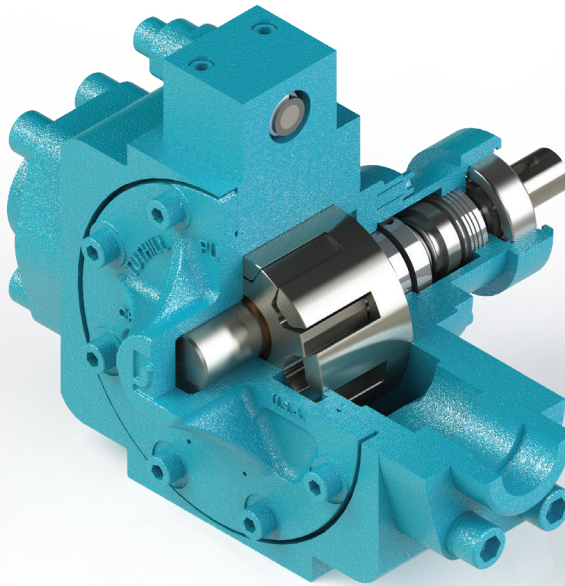
*Highly Reliable Circulation Solutions
Lubrication and Transfer Pumps*

INNOVATIVE SUCCESS

...Leveraging over 125 years of engineering experience

The 1000 Series was originally built to meet and exceed the challenging requirements of the refrigeration compressor market, but quickly found success in other industries and applications. Over the years, this family of internal gear pumps has been continuously improved to satisfy our customers' ever-changing requirements through a wide range of applications.

1000 SERIES PUMPS



DURABILITY

- Cast-iron construction
- Single-piece steel rotor assemblies
- Exceptional life

PERFORMANCE

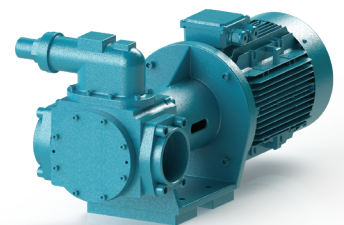
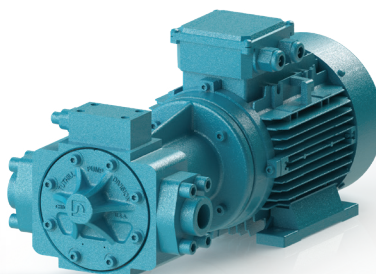
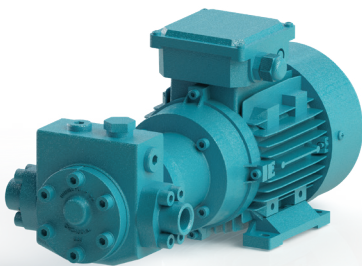
- Precision machining and grinding
- Minimal running clearances
- Consistent flow and high differential pressures

CONFIGURABLE

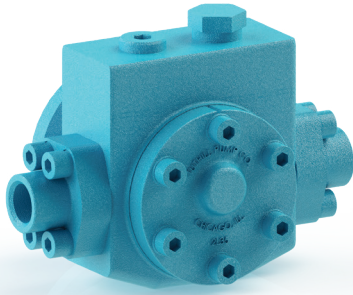
- Mounting, driving, and sealing options
- Bushing and bearing options including twin bearing design
- Variety of bolt-on porting solutions available to meet customer requirements

COMPACT & RATED TO MOTOR SPEED

1000 Series pumps have a variety of drive options, including Frame (OEM), NEMA C-face, and IEC flanged.

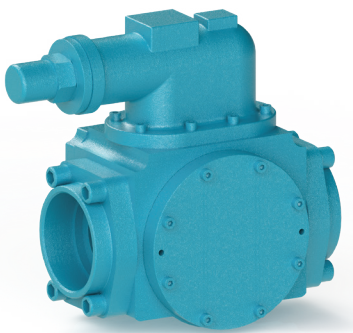


1000 SERIES



FLOWRATE AT 1450 RPM

MODEL	GPM @ 50HZ	LPM @ 50HZ
1010	4.6	17.3
1012	7.5	28
1014	10.8	41
1015	15	57
1017	30	113
1020	50	189
1022	70	265
1024	155	590



FLOWRATE AT 1750 RPM

MODEL	GPM @ 60HZ	LPM @ 60HZ
1010	5.5	20.8
1012	9	34
1014	13	49
1015	18	68
1017	36	136
1020	60	227
1022	84	318
1024	190	719

Durable: Cast iron, internal gear construction

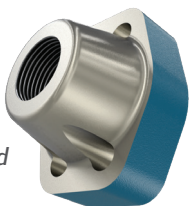
Compact: Suitable for mounting to motors via adapter or direct mounting to OEM machinery such as transmissions or compressors.

Available with internal relief valve and reversing feature.
Multiple sealing options available.

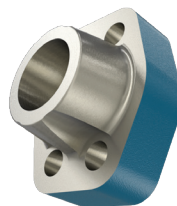
- Differential Pressures to 18 BAR (261 PSI)
- Temperatures to 200°C (392°F)
- Viscosities to 2,000 CST (9,400 SSU)
- Seals available for system pressure 55 BAR (798 PSI)

PORTING

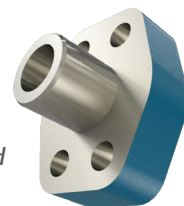
The 1000 Series pumps are fitted with SAE/DIN flanged ports which enable various port options. We have the ability to build your pump with threaded, butt weld, socket weld ports, or a blank flange. The blank flange can be tapped to your specific requirement.



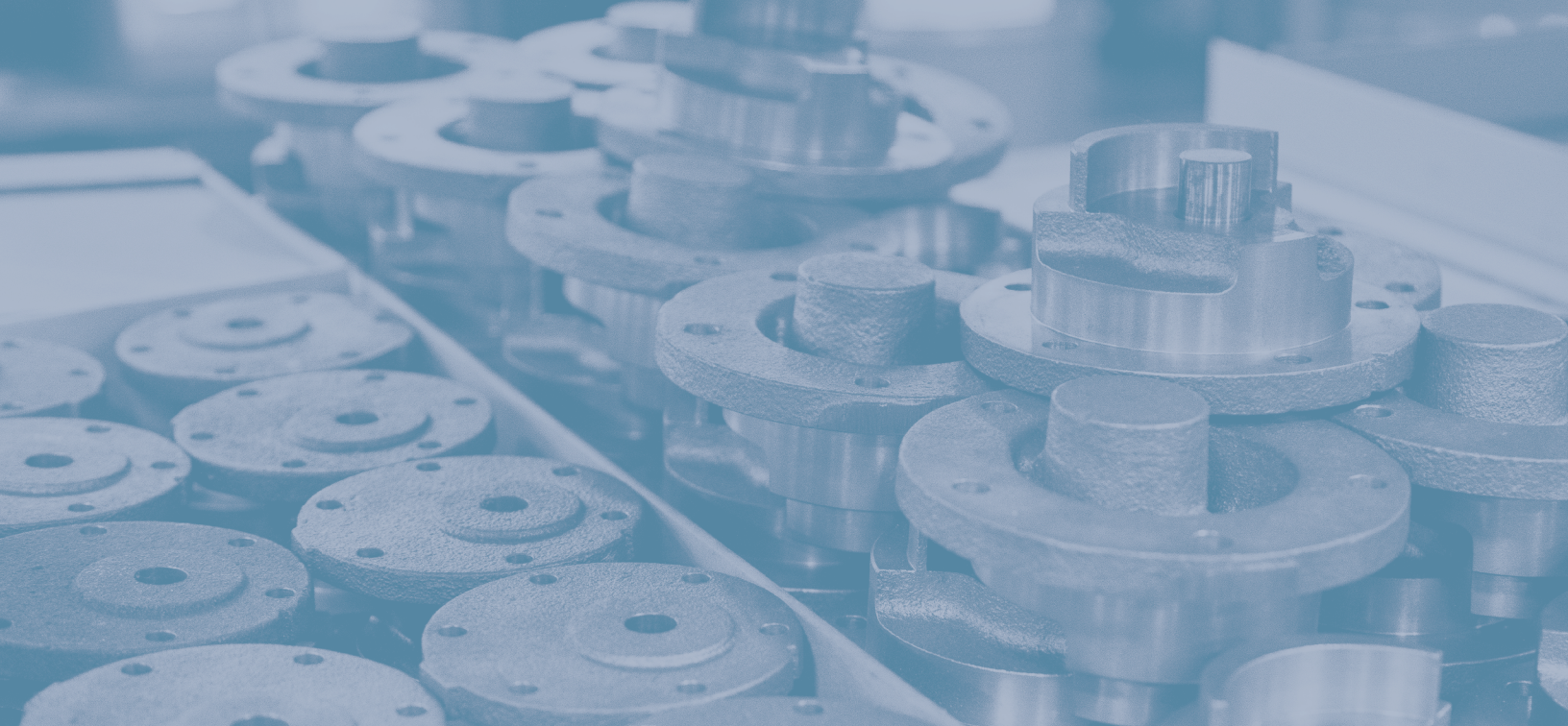
Threaded



Socket Weld



Butt Weld



INDUSTRIES AND APPLICATIONS

- Air Compressors & Pumping Equipment
- Diesel Fuel
- Energy & Power
- Fluid Transfer
- Fuel Oils
- Gear Box & Power Transmission
- Glycols & Coolants
- Heavy Machinery & Equipment
- Natural Gas Compressors
- Oil & Gas
- Refrigeration & AC Compressors



Ingersoll Rand

12500 South Pulaski Road
Alsip, Illinois 60803 USA
P: 708.389.2500
Alsip@Tuthill.com

Birkdale Close
Manners Industrial Estate
Ilkeston, Derbyshire DE7 8YA UK
P: 44.0.115.932.5226
Ilkeston@Tuthill.com



© 2022 Ingersoll Rand
IR-0922-002 EN