



GlobalGear® Series

GLOBALGEAR®

*Reduce Maintenance Time, Increase Flow
Internal Gear Pumps*

BUILT ON A TIME-TESTED DESIGN

...and more than 90 years of engineering experience

Capable of tackling the toughest high-viscosity applications, GlobalGear® uses a robust pump design along with stronger and more reliable materials to extend the pump's life, reducing the total cost of ownership. The result? An unbeatable pump that offers unparalleled performance and handles the most difficult applications worry free.

Robust Bearing
Maintenance-free lubrication

Strong Shaft Design
High-strength materials ensure reliability, less deflection, and longer seal life

In-Line Seal Maintenance
Easily convert from cartridge to packing seal

Modular Ports
Oversized, high-pressure, NPT & BSPT plus ANSI flanged options

Tough Gears
Rotor and idler gear handle high-viscosity, high-pressure operation; no need for steel rotor upgrade

SEAL OPTIONS

- Cartridge Seal
- Mechanical Seal
- Packing Seal
- Slurry Seal
- Tuffseal

- **Direct Drop-In**
Convenient footprint allows for easy upgrade to GlobalGear
- **Bi-Directional**
Flexible design suits your needs

OTHER FEATURES & BENEFITS

Back Pull-Out Design

- Reduce downtime for service
- Maintain pump without disturbing piping or shaft alignment

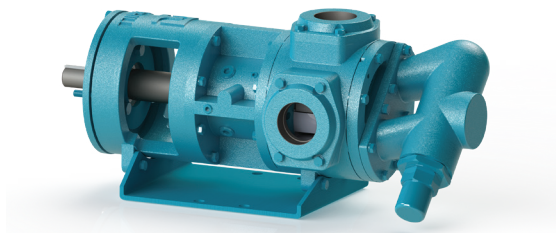
Customized Options

- Relief valve
- A variety of seal choices
- Oversized and high-pressure flanges
- Tutriding process to harden surface of pump to resist abrasion, fatigue, and limit crack propagation
- Specialized construction for high temperatures
- Modular port options
- Jacketing

Design Features Extend Seal Life

- Oversized shaft and bearing diameters on models GG130 - GG550 to minimize shaft deflection
- Large bore size for stuffing boxes for improved fluid circulation
- Internal venting to maximize seal cooling
- Proven high-viscosity seal solutions
- In-line seal maintenance

CAST IRON



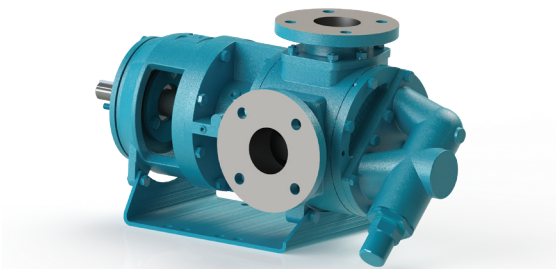
Standard carbon steel rotor shaft
 Differential pressures to 200 PSI (13.8 bar)
 Temperatures to 600 °F (316 °C)
 Viscosities to 1,000,000 SSU (220,000 cSt)

NOMINAL FLOW RATE

MODEL	MAX RPM	GPM		M ³ /HR	
GG015	1800	15 @ 1750 RPM	2.8 @ 1450 RPM		
GG030	1800	30 @ 1750 RPM	5.7 @ 1450 RPM		
GG080	1500	60 @ 1150 RPM	10.9 @ 920 RPM		
GG120	1200	75 @ 780 RPM	20.0 @ 920 RPM		
GG130	1000	100 @ 780 RPM	27.0 @ 920 RPM		
GG200	1000	135 @ 640 RPM	31.0 @ 640 RPM		
GG210	800	140 @ 520 RPM	32.0 @ 520 RPM		
GG250	640	200 @ 640 RPM	45.4 @ 640 RPM		
GG350	750	350 @ 750 RPM	79.5 @ 750 RPM		
GG550*	500	550 @ 500 RPM	124.5 @ 500 RPM		

* Differential Pressures to 150 PSI (10.3 bar)

STAINLESS STEEL



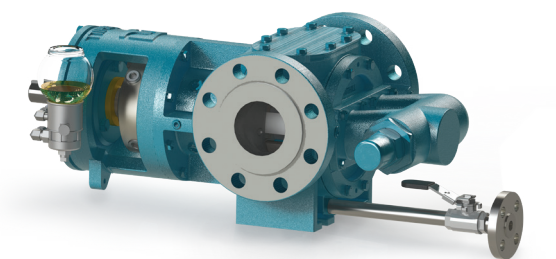
Standard gall-resistant, Nitronic 60 rotor head & idler gear
 Differential pressures to 150 PSI (10.3 bar)
 Temperatures to 500 °F (260 °C)
 Viscosities to 1,000,000 SSU (220,000 cSt)
 Max differential pressure to 100 PSI if fluid is < 100 SSU

NOMINAL FLOW RATE

MODEL	MAX RPM	GPM		M ³ /HR	
GG015	1200	10 @ 1150 RPM	2.8 @ 1450 RPM		
GG030	1200	20 @ 1150 RPM	5.7 @ 1450 RPM		
GG080	1000	40 @ 780 RPM	6.9 @ 920 RPM		
GG130	640	65 @ 520 RPM	9.1 @ 920 RPM		
GG210	520	110 @ 420 RPM	10.9 @ 920 RPM		
GG250	520	160 @ 520 RPM	36.3 @ 520 RPM		
GG550**	350	350 @ 350 RPM	80.0 @ 350 RPM		

** Differential Pressures to 125 PSI (8.6 bar)

CAST STEEL (API)

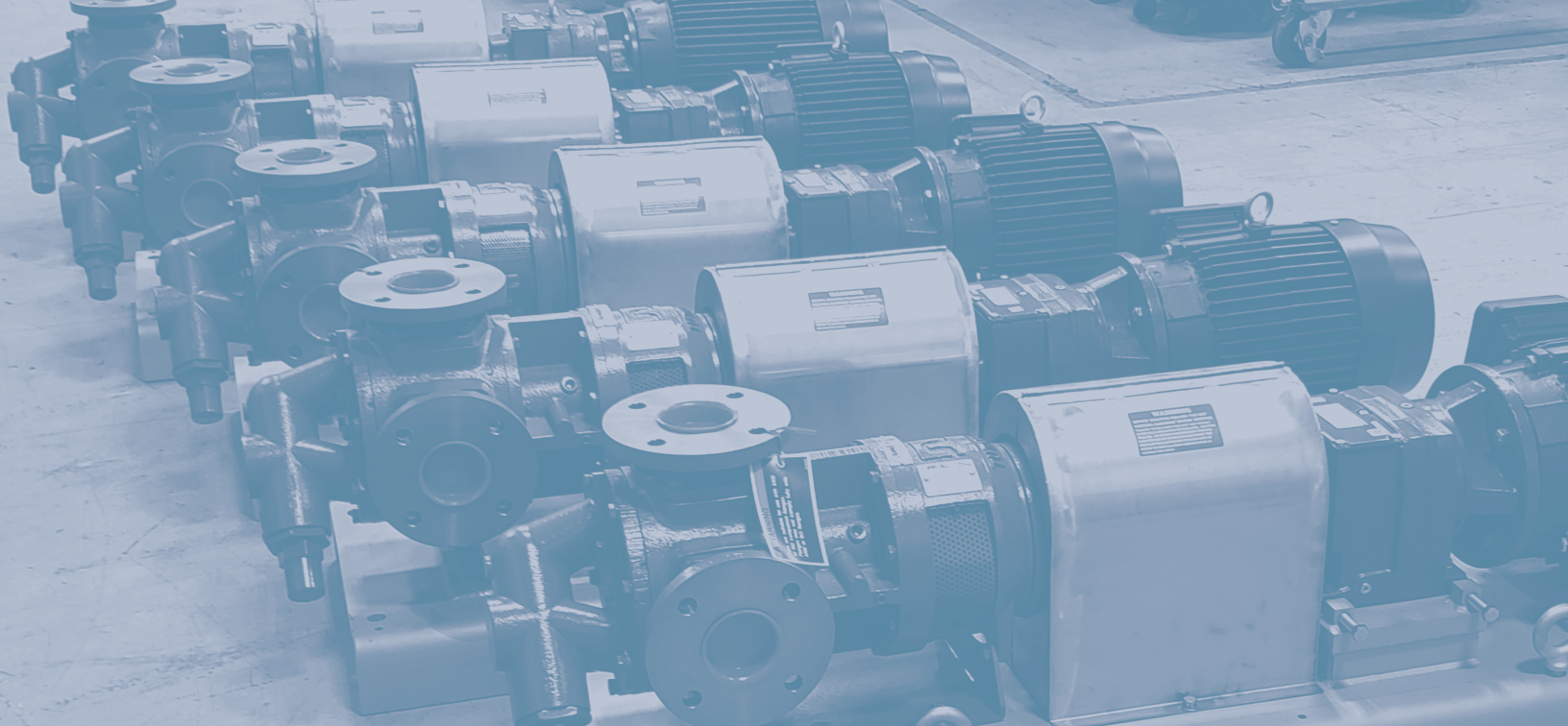


Differential pressures to 200 PSI (13.8 bar)
 Temperatures to 600 °F (316 °C)
 Viscosities to 1,000,000 SSU (220,000 cSt)

NOMINAL FLOW RATE

MODEL	MAX RPM	GPM		M ³ /HR	
GG030	1800	30 @ 1750 RPM	5.7 @ 1450 RPM		
GG130	1000	100 @ 780 RPM	27.0 @ 920 RPM		
GG250	640	200 @ 640 RPM	45.4 @ 640 RPM		
GG550†	500	550 @ 500 RPM	124.5 @ 500 RPM		

† Differential Pressures to 150 PSI (10.3 bar)



INDUSTRIES AND APPLICATIONS

- Adhesives & Sealants
- Chemical Processing
- Corrugated Box (Starch)
- Energy & Power
- Foam (Polyol & Isocyanates)
- Food & Beverage
- Lubes, Greases, & Blending
- Oil & Gas
- Personal Products
- Pulp & Paper
- Refined Food Oils
- Resins, Paints, & Coatings
- Soaps & Surfactants



Ingersoll Rand

12500 South Pulaski Road
Alsip, Illinois 60803 USA
P: 708.389.2500
Alsip@Tuthill.com

Birkdale Close
Manners Industrial Estate
Ilkeston, Derbyshire DE7 8YA UK
P: 44.0.115.932.5226
Ilkeston@Tuthill.com



© 2022 Ingersoll Rand
IR-0922-004 EN