

**INDUSTRY 4.0**



## Vantage 5000 App

Smart pumping with wireless connection



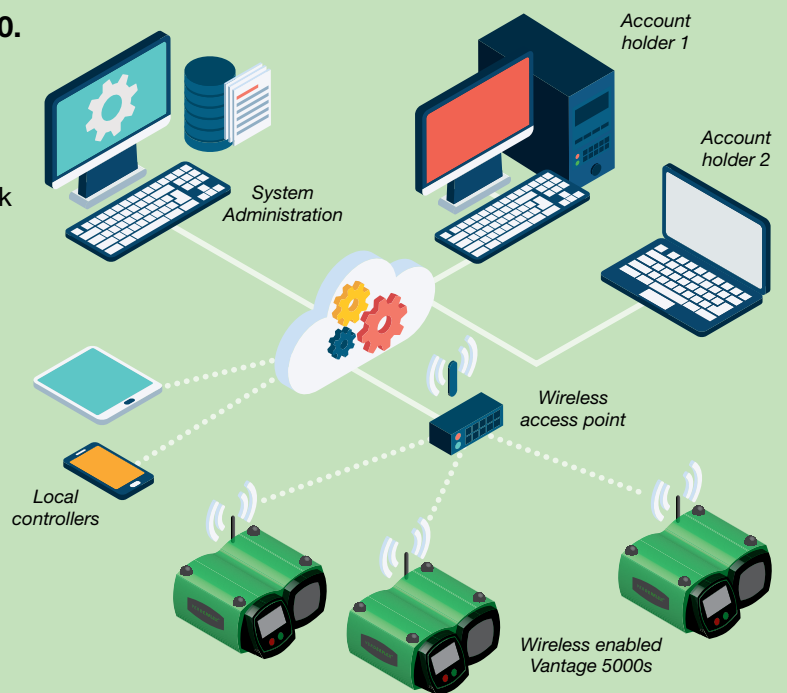
Enhance the power of the Vantage 5000 with wireless connectivity for all the benefits of Industry 4.0.

### Your benefits

- Remote control of your pump via WiFi
- Command and control a wireless dosing network
- Collect system data for trend analysis & system performance improvements
- Remote problem solving and monitoring
- Real time data for real time actions

### Each Vantage 5000 system offers

- Easy programming
- Precision Dosing
- Intuitive, icon based menus





temperature



flow mode



history



speed

### Applications

- Remote control pumps for use in specialised environments
- Centralised alarm condition monitoring
- Trend analysis from historical flow data
- Fluid usage analysis
- Account holding and status at a glance

### Features

- Display all pumps in the user account
- Select any networked pump
- Control and display selected pump flow, direction and start & stop
- Display selected pumps historical flow and thermal data
- Display pump and account alarm conditions
- Monitor pump alarms, such as 'door open' and 'tube burst'
- Review history of all logged account or individual pump events

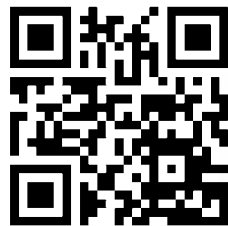
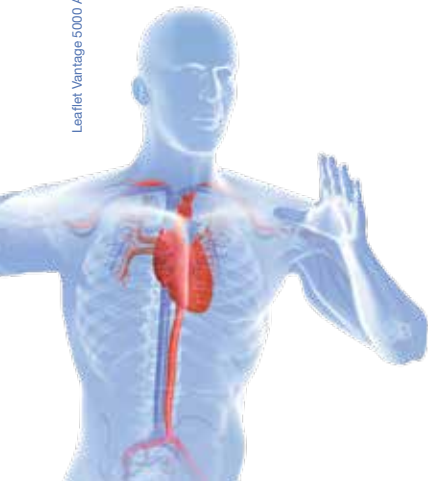
### System requirements

- Local IEEE 802.11 bgn 2.4 GHz Wi-Fi router: pumps to cloud link
- Wireless enabled Vantage 5000 pump(s)

### App platform requirements

- iOS version 11 or later
- Android version 4.4 or later

Leaflet Vantage 5000 App\_2018\_Rev1\_UK(uk)



#### VERDER LIQUIDS BV

Utrechtseweg 4A  
3451 GG Vleuten  
The Netherlands

MAIL [info@verder.com](mailto:info@verder.com)  
WEB [www.verderliquids.com](http://www.verderliquids.com)

AUSTRIA / BELGIUM / BULGARIA / CHINA / CROATIA / CZECH REPUBLIC  
GERMANY / DENMARK / FRANCE / HUNGARY / INDIA / ITALY / THE  
NETHERLANDS / POLAND / ROMANIA / SLOVAKIA / THAILAND / UNITED  
KINGDOM / USA / SERBIA / SLOVENIA / SOUTH AFRICA / SWITZERLAND