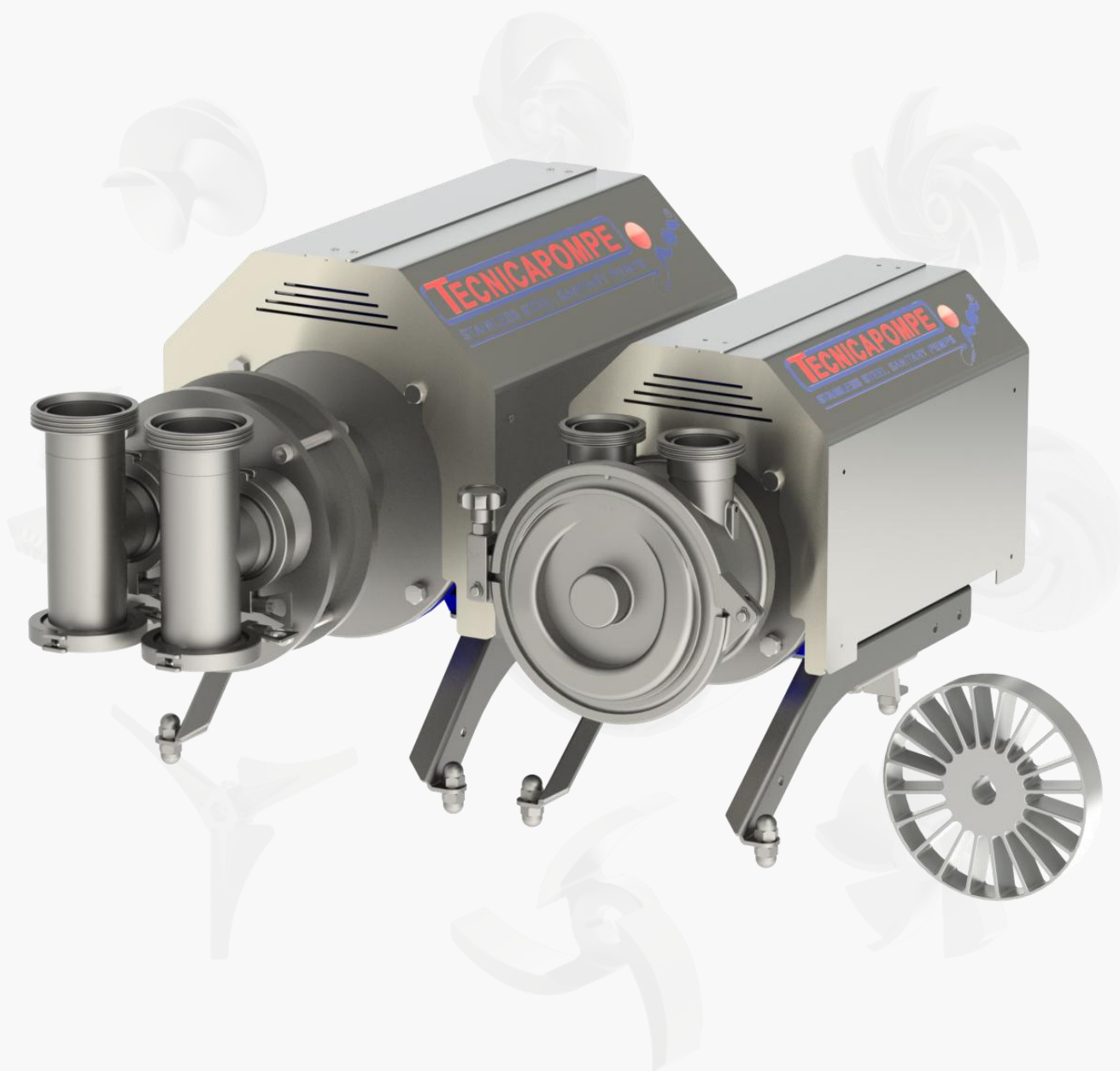


## **TA.N** and **TA.N-SC**

Self-priming, bi-directional, excellent in the restarts in depression



# | Main Characteristics

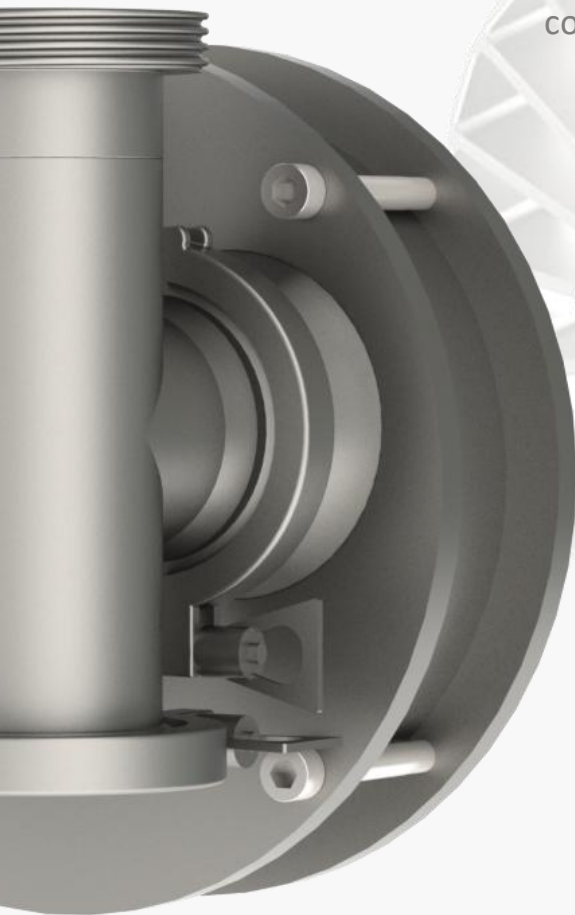
Range of sanitary **self-priming** pumps in stainless steel with reversible liquid ring. Represent the ideal solution for suction systems, **reversible decanting** of clear fluids **even in situations where the fluid is not available continuously**.

Suitable for **uses in the agro-food, chemical-pharmaceutical and water treatment industries**.

## Versions

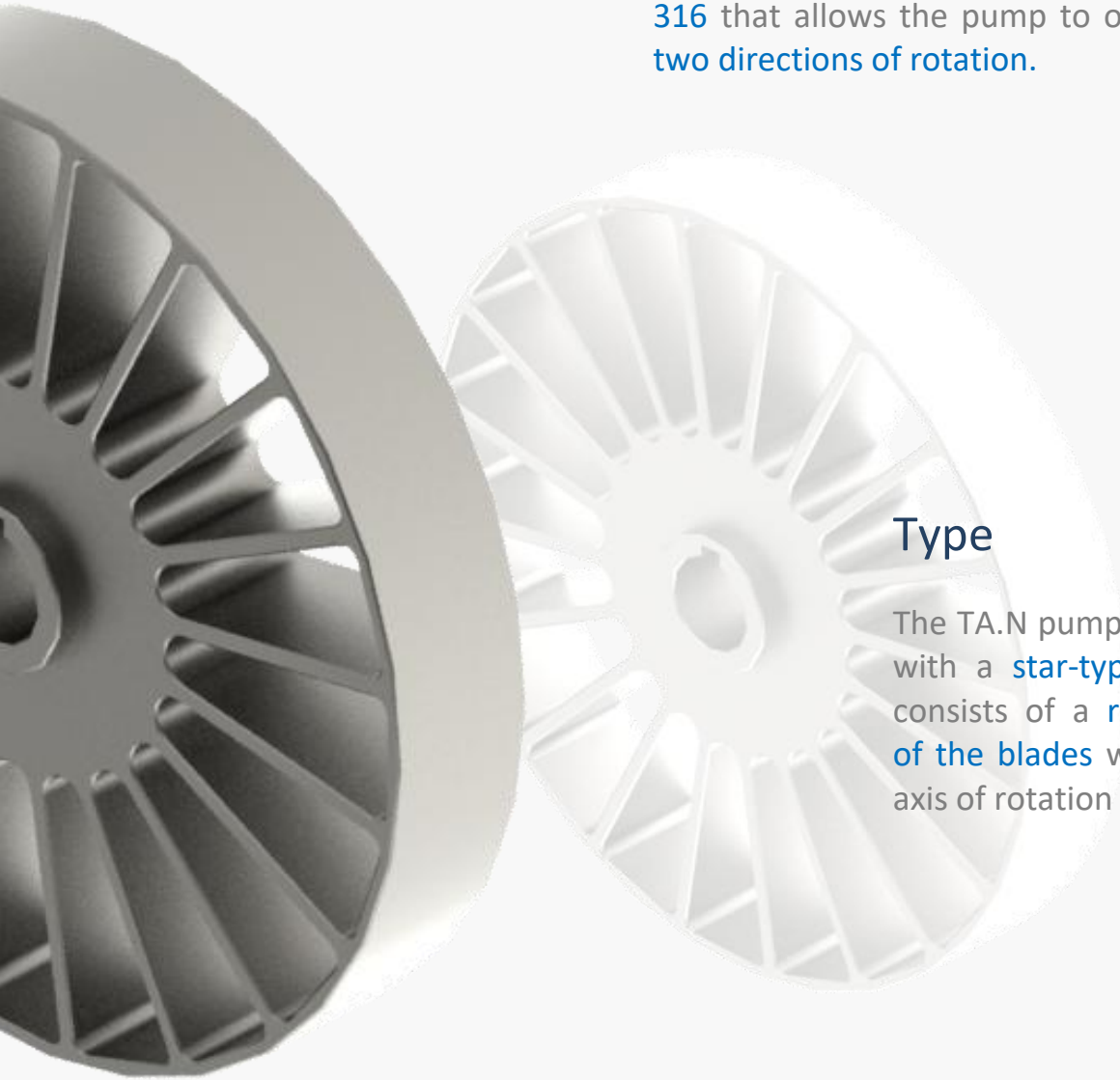
The hydraulic body components are available in two construction solutions:

- The **classic version**, obtained by a micro-casting process and subsequently machined. It has **fewer components** and is therefore the most recommended solution **for series applications and fast maintenance**.
- The **SC version**, obtained from mechanical processes, in **the most suitable solution for matching the hydraulic characteristics of the pump to the working point required**, extending the range of performances covered beyond the limits of the classic version



## The Heart

The **TA.N** boast a configuration made by mechanical processes in **stainless steel AISI 316** that allows the pump to operate in the **two directions of rotation**.



## Type

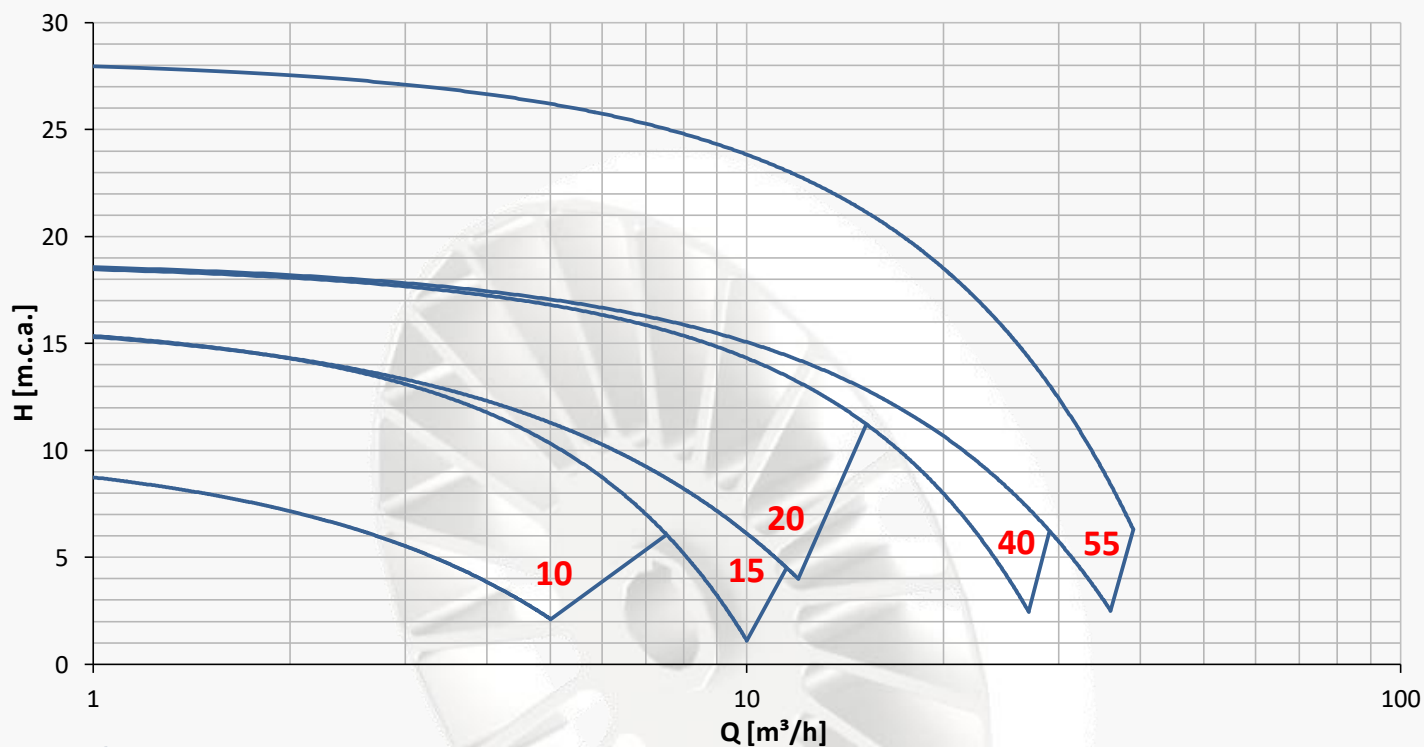
The TA.N pump series is equipped with a **star-type impeller**, which consists of a **radial arrangement of the blades** with respect to the axis of rotation

## Advantages

In order to cover a wide operative range and to satisfy different requirements, **the thickness of the impeller blades can be adjusted**

# Range of Application

4 Poles – 1450 r.p.m.



## Performances

Parameters	Values
Max. Flow Rate	100 m³/h
Max. Head	55 m.c.a.
Temperature	between -20°C a +180°C Other temperatures on request
Max. Inlet Pipeline Pressure	From -8 m.c.a. for suction application to 9,5 Bar on standard versions for in charge applications
Max. Viscosity	100 cP
Dimensions of the Solids in Suspension	For clean liquids or soluble powders mixed with aqueous base solutions

# Technical Specification

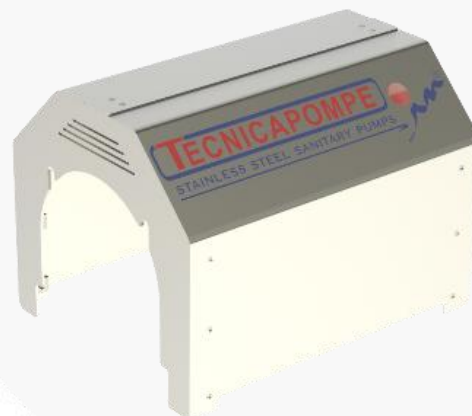
Component	Type
Connections	DIN 11851 (standard), Tri-clamp, SMS, flange (regulation on request), GAS, ENO-GAROLLA, RJT
Frame	Monobloc with B5 flange + bearings (if necessary)
	Independent frame with free end shaft + bearings(if necessary)
Mechanical Seal	Internal single execution or external double flushed, materials of the faces and the elastomers depending on the transferred fluids
Motor	3ph, according to IEC with 2 or 4 poles, insulation class depending on the transferred fluid temperature. On request even with ATEX execution or according to specific regulations (UL-CSA, NEMA)
Pump Housing Materials	AISI 316L (1.4404), AISI 304L (1.4304), for extruded or laminated components; CF8 and CF8M for micro-casted components, in different configurations depending on duty



# Accessories

## Carter

Indispensable in those applications where the pump works in wet environments or where there is a need to protect the motor from adverse environmental conditions.



## Supporting Feet

They are required when the pump works in a fixed location and is not mounted on supports or pedestals.



## Trolley

Useful for moving the pump from one location to another in the production department quickly and conveniently.



[www.tecnicapompe.com](http://www.tecnicapompe.com)

