

TC.GA

Stainless steel sanitary centrifugal pumps



| Main Characteristics

The TC.GA are high quality centrifugal pumps made of AISI 304/316 stainless steel. Equipped with a backward “vortex” impeller to ensure excellent pumping of liquids with suspended solids without them coming in contact with the impeller.

Suitable for uses in the agro-food, chemical-pharmaceutical and water treatment industries.



Versions

The TC.GA presents a unique version with a special mechanical design that is the best solution when it comes to pumping fluids from process wastewater from food, water treatment and chemical industries, therefore with a high presence of suspended solids, even filamentous solids.

Designed to allow both high sanitability and rapid internal inspection of the pump.

| Impeller

The Heart

Made of **AISI 304/316** stainless steel depending on the type of product to be pumped.

Type

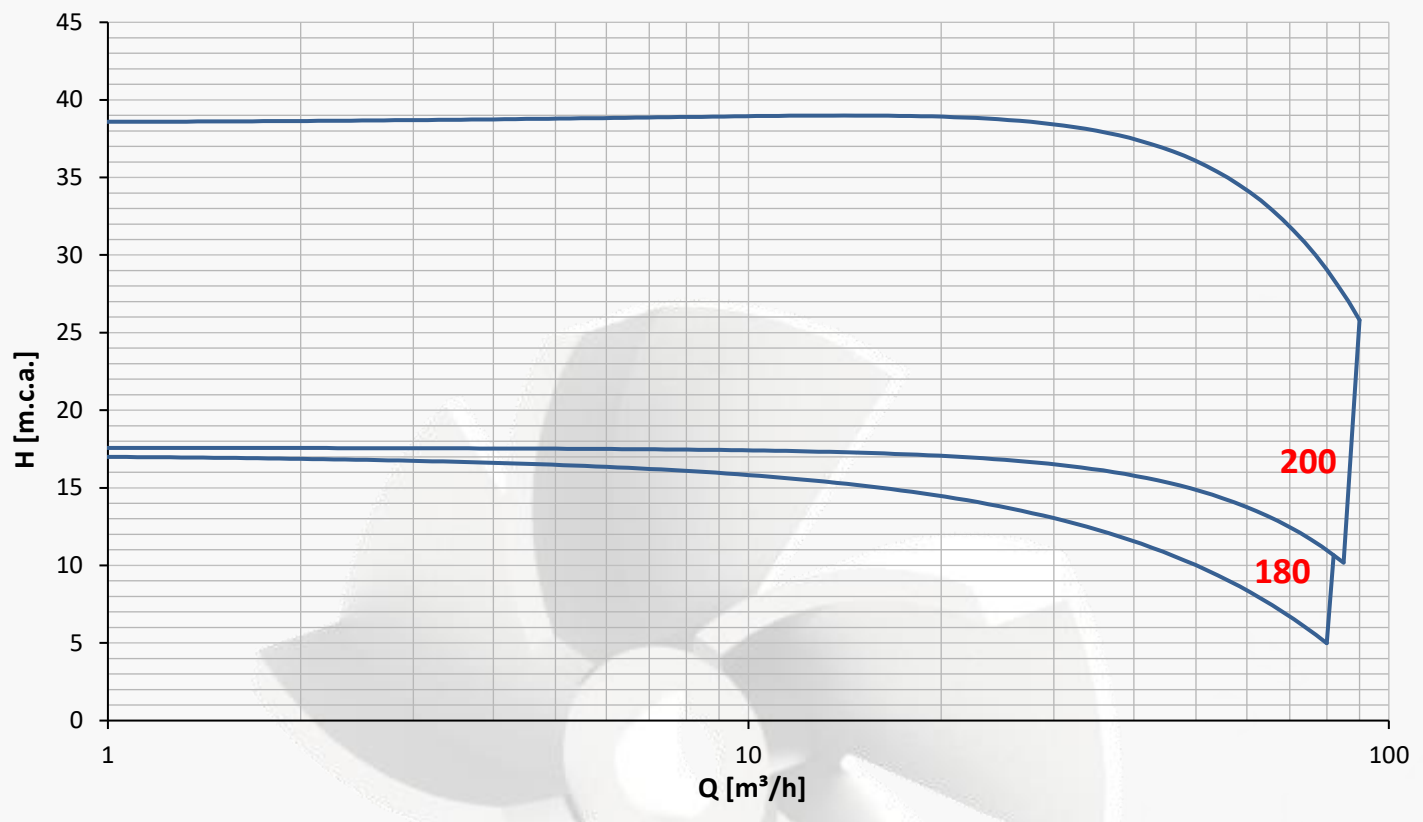
The TC.GA pump series is equipped with a **5 blades open centrifugal impeller**.

Advantages

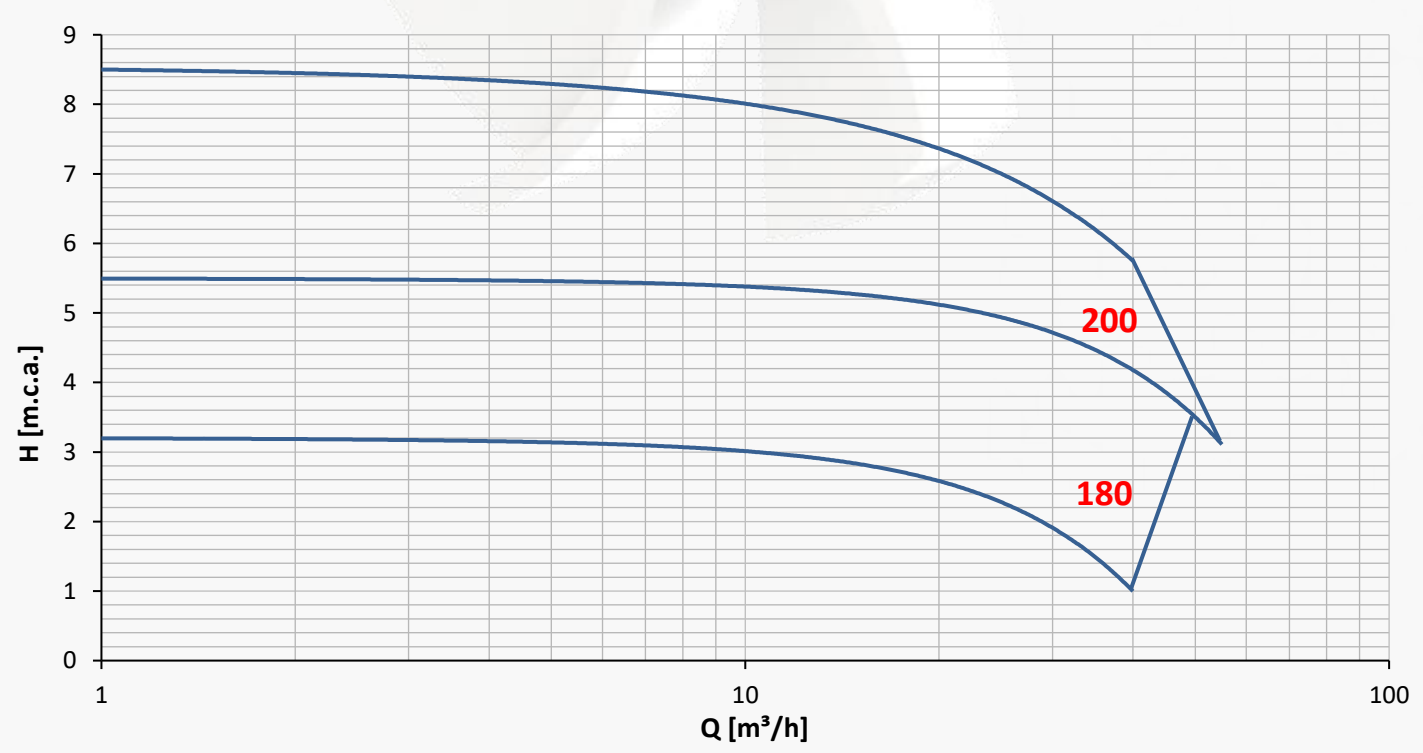
The hydraulics have been re-designed to ensure **the best flow conditions**.

Ranges of Application

2 Poles – 2900 r.p.m.



4 Poles – 1450 r.p.m.



Technical Specifications

Components	Type
Connections	DIN 11851 (standard), Tri-clamp, SMS, flange (regulation on request), GAS, ENO-GAROLLA, RJT
Frame	Monobloc with B5 flange + bearings (if necessary)
	Independent frame with free end shaft + bearings(if necessary)
Mechanical Seal	Internal single execution or external double flushed, materials of the faces and the elastomers depending on the transferred fluids
Motor	3ph, according to IEC with 2 or 4 poles, insulation class depending on the transferred fluid temperature. On request even with ATEX execution or according to specific regulations (UL-CSA, NEMA)
Pump Housing Materials	AISI 316L (1.4404), AISI 304L (1.4304), for extruded or laminated components; CF8 and CF8M for micro-casted components, in different configurations depending on duty

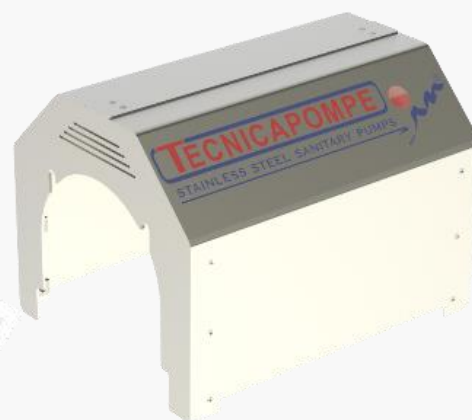


Parameters	Values
Max. Flow Rate	115 m ³ /h
Max. Head	40 m.c.a.
Temperature	between -20°C and +240°C
Max. Inlet Pipeline Pressure	9 Bar on the standard version
Max. Viscosity	500 cP
Dimensions of the Solids in Suspension	For clean liquids or with presence of suspended solids also filamentous. Maximum dimensions of suspended solids indicated on the pump technical data sheet

Accessories

Carter

Indispensable in those applications where the pump works in wet environments or where there is a need to protect the motor from adverse environmental conditions.



Supporting Feet

They are required when the pump works in a fixed location and is not mounted on supports or pedestals.



Trolley

Useful for moving the pump from one location to another in the production department quickly and conveniently.

