

TC.ZV and TC.ZV/QS

Stainless steel sanitary centrifugal pumps



| Principal Characteristics

Range of sanitary mixed flow pumps in stainless steel, equipped with helicoidal screw shaped impeller and realized with a **rugged and innovative design**. Ideal solution **in the gentle hydraulic transportation of delicate food products such as fruits, vegetables or fishes, without damages or alterations to the organoleptic characteristics**.

Versions

The hydraulic body components are available in two designs:

- The hydraulic architecture of the **TC.ZV** series is characterized **by strength and reliability** in applications where the transfer of large solid products is the main problem to be solved.
- The **"QS"** model are larger TC.ZV pumps assembled, almost in their entirety, by mechanical processes, making their structure more resistant. They are ideal for customized applications and **for conveying even very large delicate products**.



The Heart

Made of stainless steel [AISI 316](#) by precision casting.



Type

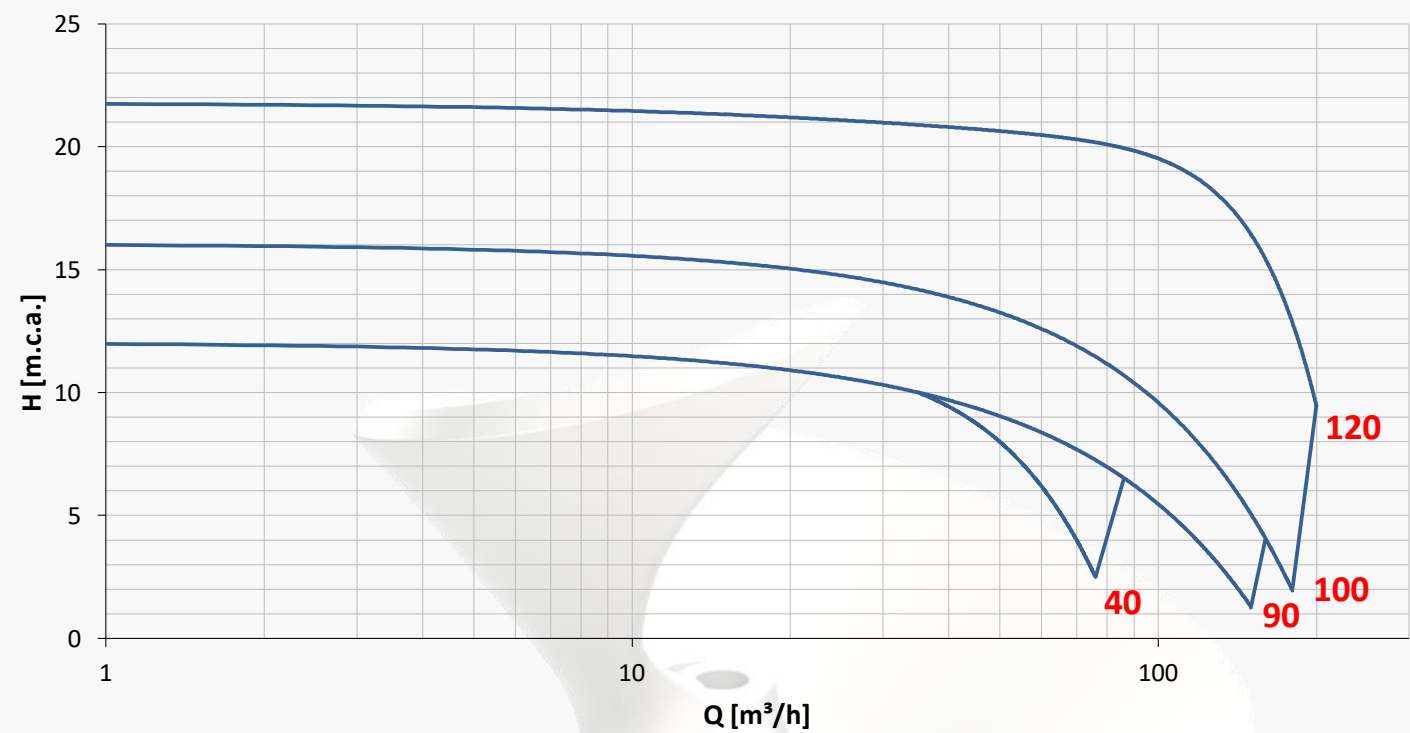
The TC.ZV-TC.ZV/QS are equipped with a [single or dual mixed flow impeller](#).

Advantages

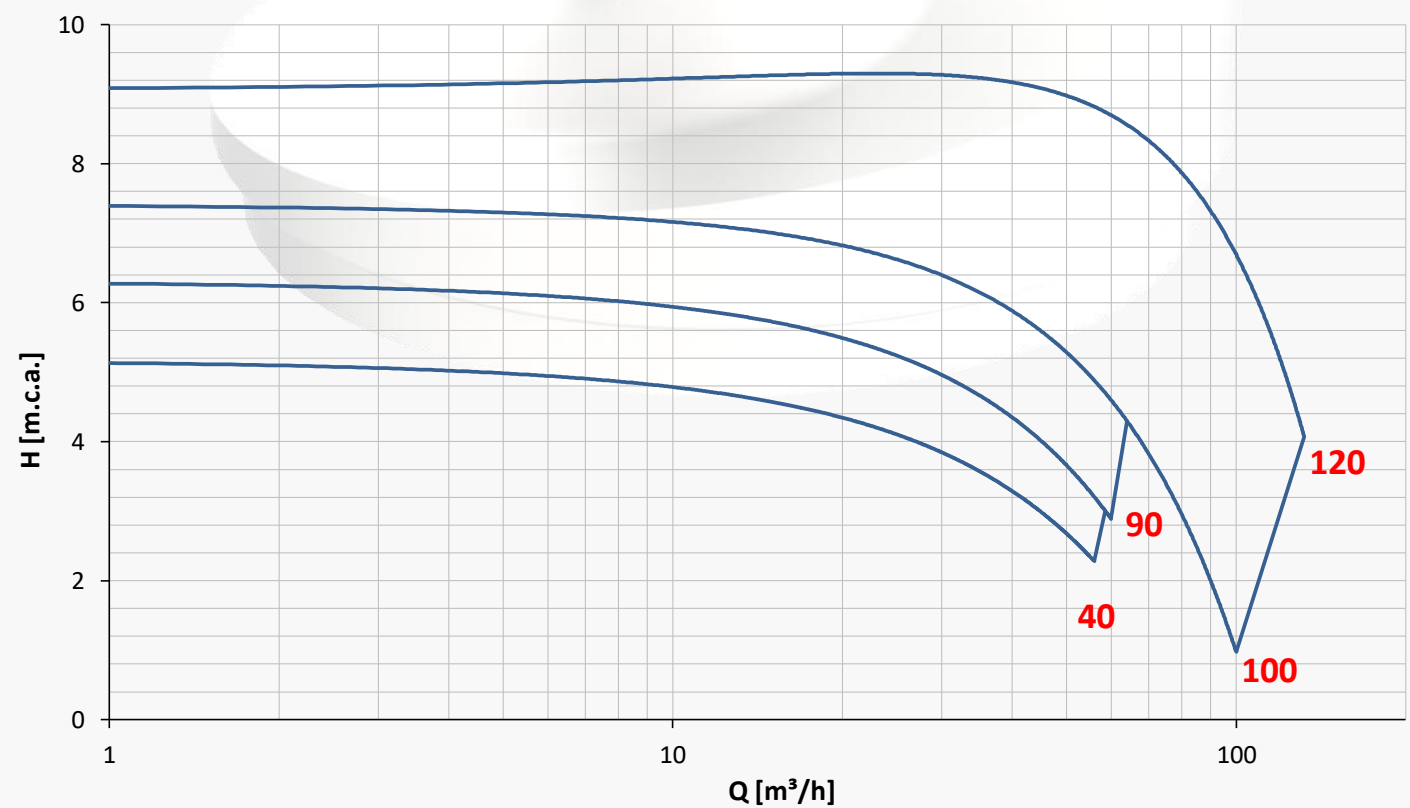
The shape has been optimized to guarantee the [best flow conditions](#), without [damaging the delicate product](#) transferred.

Range of Application

4 Poles – 1450 r.p.m.

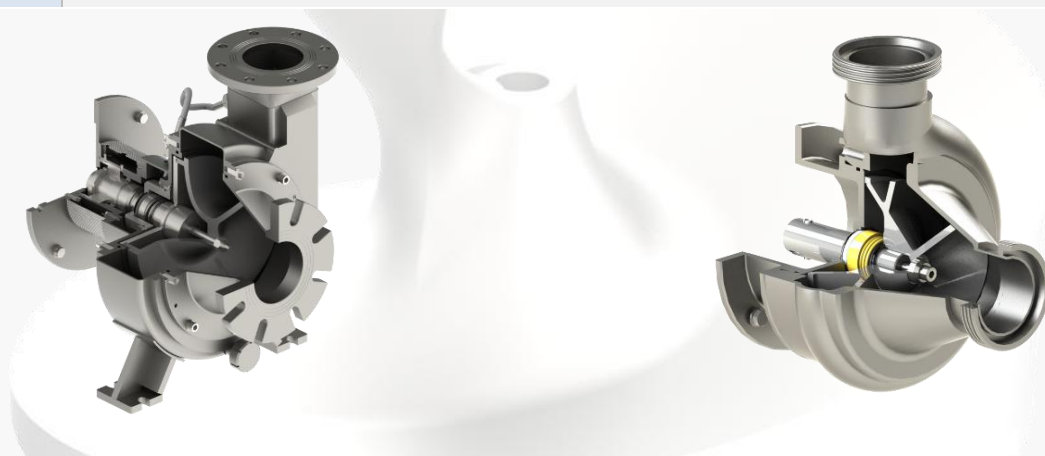


6 Poles – 950 r.p.m.



Technical Specifications

Component	Type
Connections	DIN 11851 (standard), Tri-clamp, SMS, flange (regulation on request)
Frame	Monobloc with B5 flange + bearings (if necessary)
	Independent frame with free end shaft + bearings(if necessary)
Mechanical Seal	Internal single execution or external double flushed, materials of the faces and the elastomers depending on the transferred fluids
Motor	3ph, according to IEC with 2 or 4 poles, insulation class depending on the transferred fluid temperature. On request even with ATEX execution or according to specific regulations (UL-CSA, NEMA)
Pump Housing Materials	AISI 316L (1.4404), AISI 304L (1.4304), for extruded or laminated components; CF8 and CF8M for micro-casted components, in different configurations depending on duty

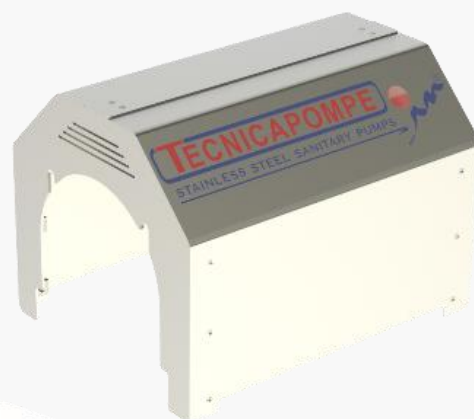


Parameters	Values
Max. Flow Rate	1500 m ³ /h
Max. Head	45 m.c.a.
Temperature	between -20°C and +240°C
Max. Inlet Pipeline Pressure	15 Bar on standard version
Max. Viscosity	500 cP
Dimensions of the Solids in Suspension	For liquids with suspended solids, even filamentous. The maximum dimensions of the same are indicated on the pump technical data sheet

Accessories

Carter

Indispensable in those applications where the pump works in wet environments or where there is a need to protect the motor from adverse environmental conditions.



Supporting Feet

They are required when the pump works in a fixed location and is not mounted on supports or pedestals.



Trolley

Useful for moving the pump from one location to another in the production department quickly and conveniently.



