

TC.EH

Stainless steel sanitary pumps



| Main Characteristics

A range of sanitary stainless steel centrifugal pumps with a **hygienic and elegant design**, ideal for processes in the food and pharmaceutical industries **that aim to preserve the quality and integrity of treated fluids from foreign agents**.

Suitable for **uses in the agro-food, chemical-pharmaceutical and water treatment industries**.



Versions

The TC.EH presents a unique version with a special architecture that **allows it to cover an extended performance range** while ensuring **high standards of hygiene**, allowing **rapid and complete disassembly and sanitization of each individual component**.

The Heart

Made of **AISI 316 stainless steel** by micro-casting and **machined** to obtain a smooth blade surface.

Type

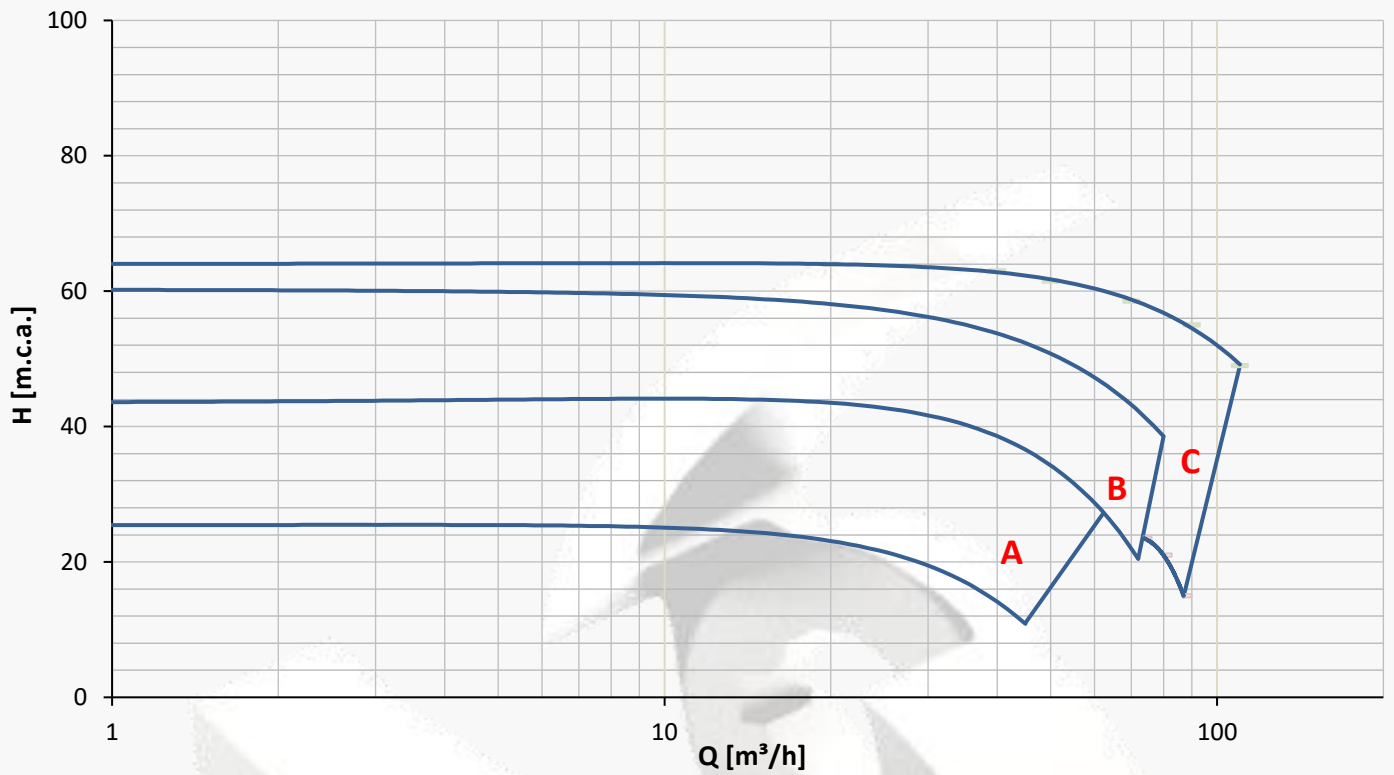
It is a “open” impeller composed of **three or four blades**, according to the required performances.

Advantages

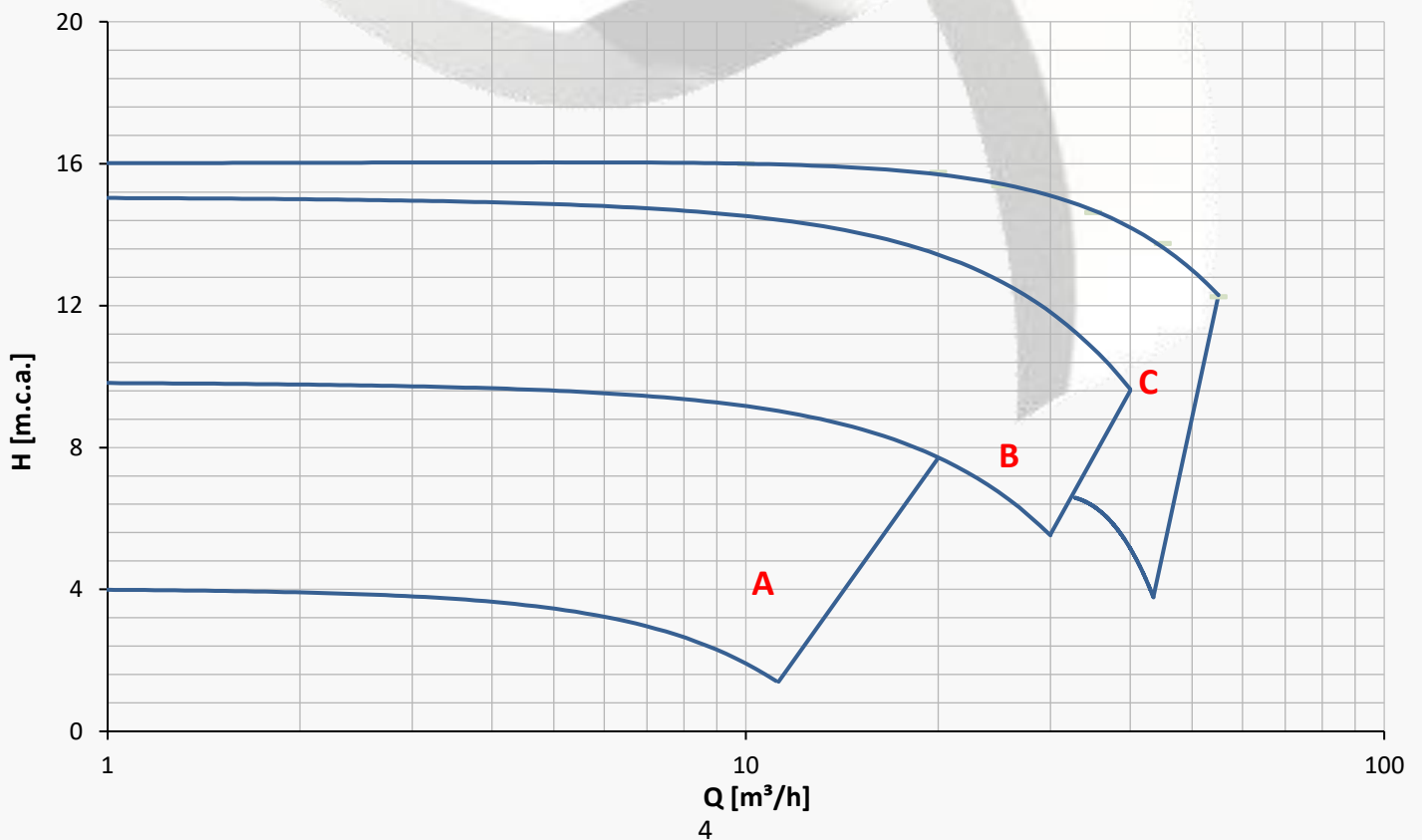
The blading profile has been optimized to guarantee **the best flow conditions** by providing the **passage of solid parts up to a diameter of 10 mm maximum**.

Range of Application

2 Poles – 2900 r.p.m.

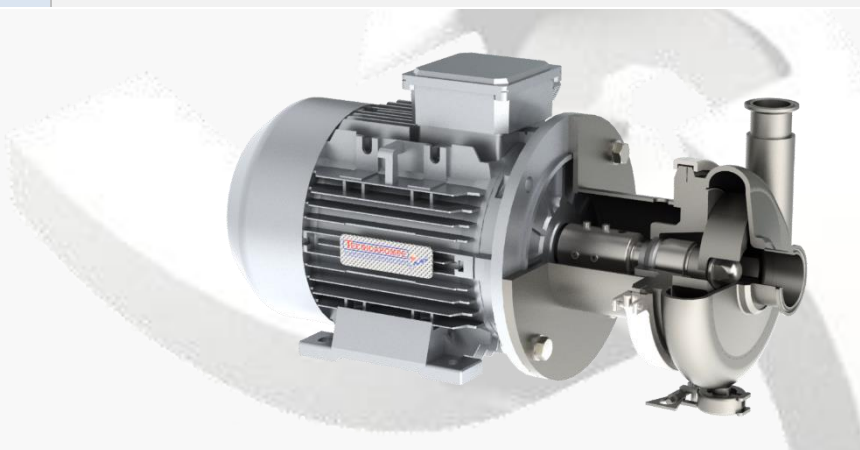


4 Poles – 1450 r.p.m.



Technical Specifications

Component	Type
Connections	DIN 11851 (standard), Tri-clamp, SMS, flange (regulation on request), GAS, ENO-GAROLLA, RJT
Frame	Monobloc with B5 flange + bearings (if necessary)
	Independent frame with free end shaft + bearings(if necessary)
Mechanical Seal	Internal single execution or external double flushed, materials of the faces and the elastomers depending on the transferred fluids
Motor	3ph, according to IEC with 2 or 4 poles, insulation class depending on the transferred fluid temperature. On request even with ATEX execution or according to specific regulations (UL-CSA, NEMA)
Pump Housing Materials	AISI 316L (1.4404), AISI 304L (1.4304), for extruded or laminated components; CF8 and CF8M for micro-casted components, in different configurations depending on duty

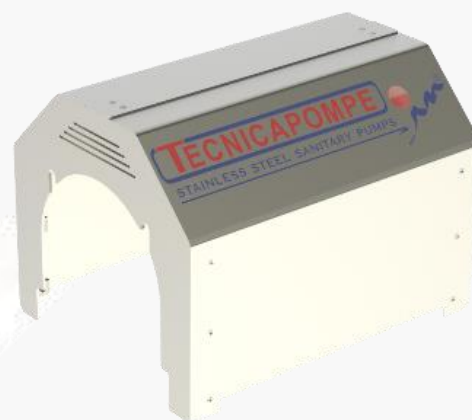


Parameters	Values
Max. Flow Rate	150 m ³ /h
Max. Head	70 m.c.a.
Temperature	between -20°C and +240°C
Max. Inlet Pipeline Pressure	12 Bar
Max. Viscosity	500 cP
Dimensions of the Solid in Suspension	For clean liquids or with presence of suspended solids also filamentous. Maximum dimensions of suspended solids indicated on the pump technical data sheet

Accessories

Carter

Indispensable in those applications where the pump works in wet environments or where there is a need to protect the motor from adverse environmental conditions.



Supporting Feet

They are required when the pump works in a fixed location and is not mounted on supports or pedestals.



Trolley

Useful for moving the pump from one location to another in the production department quickly and conveniently.

